

Odisha Power Transmission Corporation Ltd.  
Bhubaneswar.



*Agenda*  
*for*  
106<sup>th</sup> Power System Operational Coordination Meeting

Date: 20.02.2017  
Venue: PTC, Chandaka, Bhubaneswar

**Agenda for 106<sup>th</sup> PSOC Meeting to be held on 20.02.2017 at PTC, Chandaka, Bhubaneswar**

**Item no. 1: Confirmation of the minutes of the 105<sup>th</sup> PSOC Meeting held on 21.01.2017**

The minutes of meeting was circulated vide letter No. SGM (PS)-PI-15/2016/ 473<sup>(45)</sup> dated 04.01.2017 to all the members and also uploaded in the SLDC website. No comment has been received from any of the members.

*Members may offer their comments. If there is no comment, the minutes of the meeting may please be confirmed.*

**PART A**

**(List of items to be discussed for which the details are given in the subsequent parts)**

B : Grid Performance for the month of January'2017

- C.1: Status of projects funded under PSDF scheme
- C.2: Consideration of STU lines as Non-ISTS lines carrying ISTS power
- C.3: High Voltage Problem in 400 kV Meramundali grid S/S: Regarding
- C.4: Restoration of PLCC system of important lines
- C.5: 220 kV inter-connecting lines of OPTCL with 400/220 kV Bolangir (PG), Keonjhar & Pandiabil S/s
- C.6: Preparation of crisis management plan for Cyber Security in Power Sector in line with CERT-IN.
- C.7: Certification through BIS as per IS 18001:2007 to all generating/ transmission units.
- C.8: Implementation of New Web Based Scheduling at ERLDC
- C.9: Tie bay of 125 MVar bus-reactor & 400kV Indravati –Indravati PG
- C.10: Implementation of Automatic Demand Management Scheme (ADMS)
- C.11: Mock Black start exercise in Eastern Region

D.1: Non-compliance of drawal schedule by DISCOMs

- D.2: Prolonged outage of transmission elements and tentative revival dates
- D.3: Communication issues
- D.4: Web based drawal / generation scheduling.
- D.5: Implementation of Automatic Meter Reading for OPTCL-Discom interface points.
- D.6: Software for Deviation charge billing.
- D.7: DISCOM Issues

E.1: Commissioning status of New Transmission elements.

- E.2: Energy Metering at Hydro Stations.
- E.3: Major Events in the month of January'17
- E.4: Important Grid Incidences during the month of January'17.
- E.5: Outage of major transmission Elements during the month January'17. (above 10 hrs).
- E.6: Review of Outage Program of State Generators for the month of March'2017
- E.7: Generation Program for the month of March'2017.
- E.8: Anticipated power generation and demand for the month of March'2017.

F.1: Renaming of SLDC Website.

F.2: Date and Venue of the next (107<sup>th</sup>) PSOC meeting

## PART B: GRID PERFORMANCE

### Review of Grid Performance for the month of January'17.

#### (A) Frequency:

##### Hourly frequency variation for the month of January'17.

Month	% of time frequency remained				
	<49.00	49.00-49.70	49.70-49.90	<b>49.90-50.05</b>	>50.05
Nov'16	0.00	0.10	9.43	71.91	18.56
Dec'16	0.00	0.01	13.74	70.61	15.64
<b>Jan'17</b>	<b>0.00</b>	<b>0.00</b>	<b>7.89</b>	<b>72.88</b>	<b>19.23</b>

##### Maximum & Minimum frequency during the month of January'17.

Month	Freq (Hz)	Date	Time
Dec'16	Maximum – 50.15	26.12.16	03:45 Hrs
	Minimum – 49.77	12.12.16	09:15 Hrs
<b>Jan'17</b>	Maximum – 50.27	26.01.17	23:45 Hrs
	Minimum – 49.81	10.01.17	18:15 Hrs

#### (B) Grid Demand for the month of January'17.

Month	Demand		Maximum Consumption		Maximum Demand			Minimum Demand		
	MU	Avg. (MW)	MU	Date	MW	Date	Time	MW	Date	Time
Dec'16	2005	2695	71.18	31.12.16	3831	31.12.16	19:00	1967	20.12.16	15:00
<b>Jan'17</b>	<b>2098</b>	<b>2820</b>	<b>73.11</b>	<b>04.01.17</b>	<b>3794</b>	<b>04.01.17</b>	<b>19:00</b>	<b>2088</b>	<b>25.01.17</b>	<b>15:00</b>
<b>Jan'16</b>	<b>2095</b>	<b>2816</b>	<b>70.71</b>	<b>30.01.16</b>	<b>3861</b>	<b>28.01.16</b>	<b>20:00</b>	<b>2117</b>	<b>28.01.16</b>	<b>14:00</b>

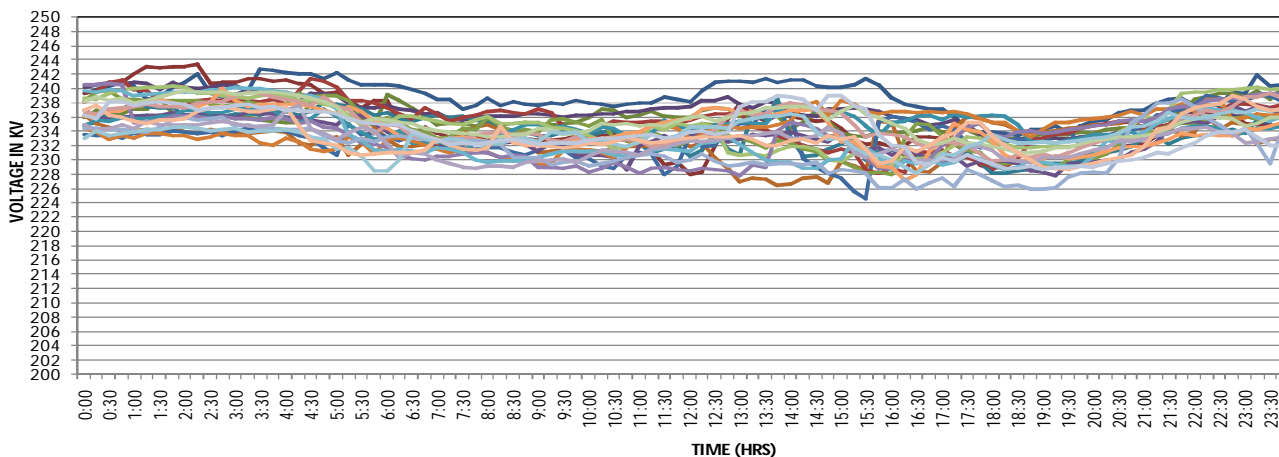
Members may please discuss.

#### (C) Voltage Profile of 220 kV Buses in OPTCL system for the month of: January'17

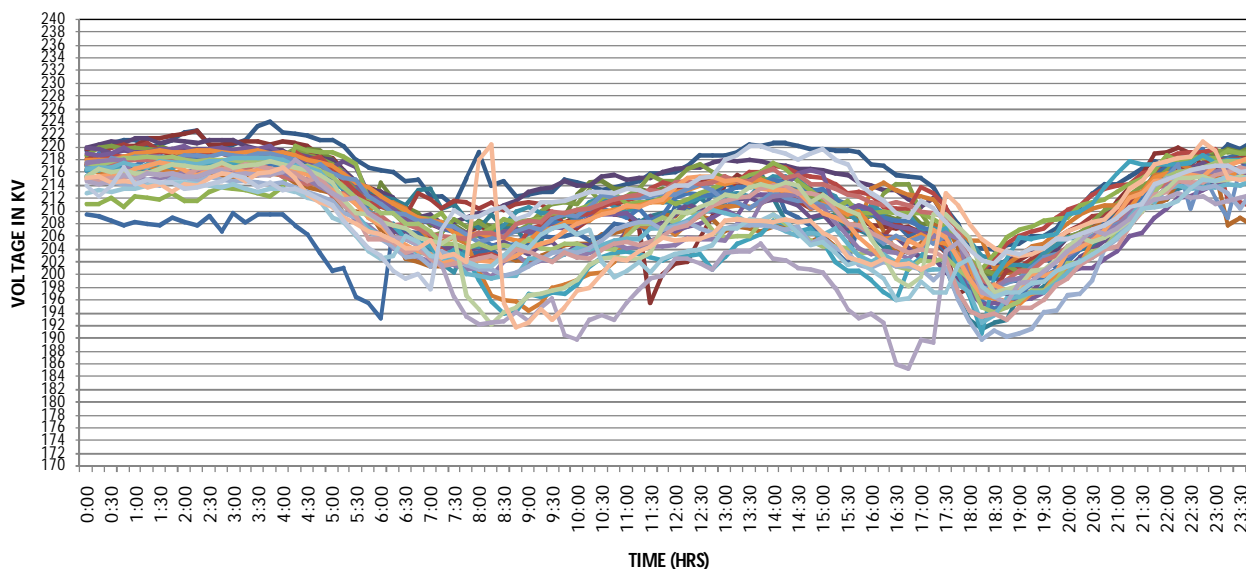
Sl. No	S/s Name	Maximum			Minimum		
		kV	Day	Time	kV	Day	Time
1	Balasure	237.07	02	04:30	220.83	18	18:00
2	Barkote	237.40	02	02:15	230.47	28	18:45
3	Bhadrak	238.90	06	01:45	217.25	26	18:30
4	Bhanjanagar	240.92	22	02:15	218.17	26	18:15
5	Bidanasi	239.36	02	02:15	214.83	28	18:30
6	Bolangir	231.86	02	02:15	214.13	15	11:00
7	Budhipadar	234.46	16	03:30	226.14	5	09:00
8	Chandaka	236.71	02	02:15	210.38	28	18:30
9	Duburi(O)	236.36	06	01:45	221.35	31	18:15
10	Duburi (N)	228.16	06	03:15	213.84	31	18:15
11	Jayanagar	<b>243.46</b>	02	02:15	224.64	07	15:30
12	Joda	238.95	02	14:15	224.84	30	18:00
13	Katapalli	233.01	03	01:30	215.00	15	11:00
14	Laxmipur	240.98	02	02:15	221.81	17	16:15
15	Mendhasal	238.27	02	02:15	212.23	28	18:30
16	Meramundali	235.26	04	03:00	216.37	31	12:15
17	Narendrapur	224.12	01	03:45	<b>185.44</b>	28	16:45
18	Nayagarh	237.63	01	03:30	214.48	28	18:30
19	Paradeep	233.07	22	01:45	211.42	31	18:15
20	Tarkera	237.23	16	03:15	229.43	28	18:45
21	Theruvali	235.32	02	12:15	211.36	25	18:15

The maximum Voltage of **243.46** kV occurred at Jaynagar 220 kV bus while Narendrapur, 220 kV bus has experienced the minimum Voltage of **185.44** kV. Bus Voltages at Samgara and Lapanga could not be incorporated due to non availability of energy meter in those S/SS. Status of replacement of defective CVT at Narendrapur may be updated. The 220 kV Voltage profile of Jayanagar and Narendrapur and 400 kV Voltage profile of Meramundali bus during the month of January 2017 is shown.

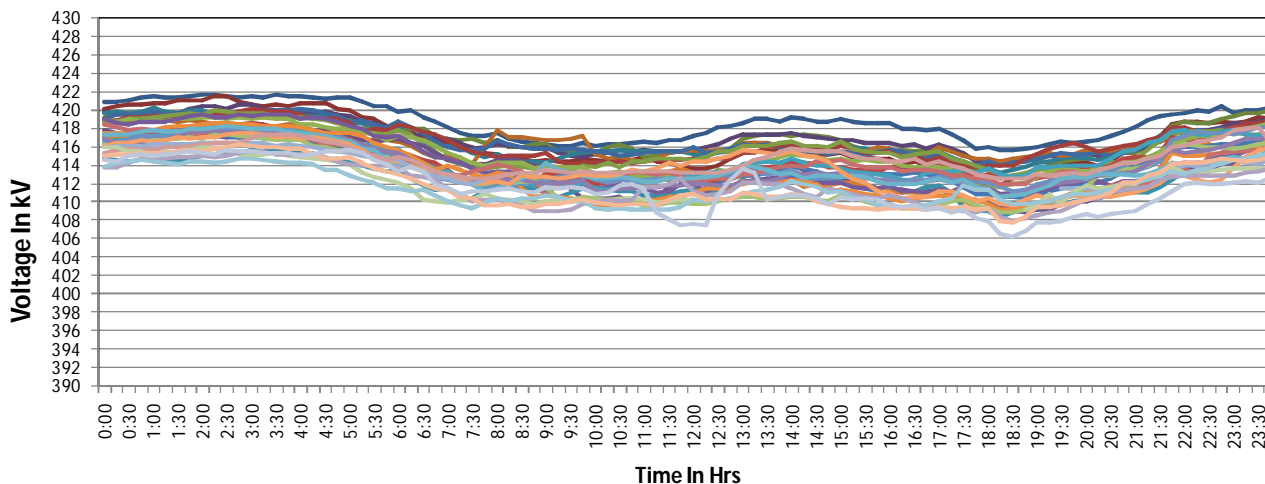
### 220 kV VOLTAGE PROFILE OF JAYANAGAR S/S FOR THE MONTH OF JANUARY'17



### 220 kV VOLTAGE PROFILE OF NARENDRAPUR S/S FOR THE MONTH OF JANUARY'2017



### 400kV BUS VOLTAGE OF MERAMUNDALI S/s FOR THE MONTH OF JANUARY 2017



Members may discuss.

**(D) Loading of 220/ 132 kV Auto at 220 kV S/Ss in OPTCL system for the month of Jan-17  
AUTO TRANSFORMER LOADING FOR THE MONTH OF JANUARY'2017**

Name of the 220 kV Sub-Station ( Feeding Sub-stations/Feeders )	Capacity  MVA	Drawal details						REMARKS
		Maximum			Minimum			
		MW	Day	Time	MW	Day	Time	
BALASORE 220/132 KV { Balasore, Birla Tyre(I), Ispat Alloy(I), Jaleswar, Jaleswar(T)}	2x160	121.44	21	18:15	45.96	9	1:30	
		116.24	19	20:00	43.56	21	8:15	
BHADRAK 220/132 KV {Bhadrak area load, Bhadrak(T),Soro, FACOR (I), Dhamra Port}	3x100	66.28	21	18:00	11.00	21	16:30	
		63.32	21	18:00	10.72	21	16:30	
		METER NOT CONNECTED						
BHANJANAGAR 220/132 KV { Bhanjanagar, Aska, Phulbani, Ganjam, Chatrapur}	1x160	98.12	30	18:15	15.40	12	14:00	
	1x160	85.88	30	18:15	13.24	12	14:00	
BIDANASI 220/132 KV {Bidanasi, Khurda }	1x160	NOT AVAILABLE						
	1x100	39.52	29	0:45	2.92	14	18:00	
	1x100	38.84	13	15:30	3.04	2	18:15	
BOLANGIR (SADAIPALLI) 220/132 KV { Bolangir, Patnagarh, Sonapur, Sainatala, Khariar, Barpalli }	2x160	124.16	19.00	18:30	10.56	16	11:45	
		122.96	19.00	18:30	23.12	28	10:45	
BUDHIPADAR 220/132 KV { Jharsuguda, Jharsuguda Tr, Cemco(I), MCL, Sundergarh,Brajarnagar, Rajgangpur}	2x160	96.12	10	10:30	7.56	17	10:15	
		92.64	17	10:30	27.28	10	8:45	
CHANDAKA 220/132 KV { Chandaka, Bhubaneswar, Nimapada, Ransinghpur, Puri,Kesura, Kaipadar Tr. }	1x100	56.12	19	18:15	25.52	17	1:45	Auto-III under shutdown.
	1x160	136.48	28	10:30	43.92	3	15:00	
	1x100	UNDER SHUT DOWN						
	1x160	102.44	28	4:45	41.92	3	15:00	
DUBURI 220/132 KV {Duburi, Bamnipa(I), BRPL, MESCO, Jajpur Road, Kalarangi, Jajpur Town}	3x100	72.44	22	20:00	9.24	2	7:15	Auto-II under shutdown.
		UNDER SHUT DOWN						
		70.24	22	20:00	9.12	2	7:15	
JAYANAGAR 220/132 KV. [Damanjodi(NALCO), Traction S/Ss, Tentulikhunti, Sunabeda, Jayanagar]	1x160	82.20	10	20:00	15.88	12	14:15	
	1x100	97.36	20	17:30	15.8	12	14:15	
JODA 220/132 KV { Joda,Tensa, FAP(I), Bolani(I), Nalda Tr.,Polasponga, *Rairangpur, Bhalulata traction}	3x100	METER NOT INSTALLED						*** - Alternate P/S from Kuchei.
		METER NOT INSTALLED						
		METER NOT INSTALLED						
KATAPALI 220/132 KV {Chipilima,Bargarh, ACC,Sonapur & Katapali area load.}	1x100	75.44	4	10:30	12.44	6	20:45	Supported by Burla & Chipilima power.
	1x100	45.92	25	16:00	12.36	6	20:45	
	1x160	METER NOT INSTALLED						
Lapanga	1x160	NOT AVAILABLE						
	1x160	NOT AVAILABLE						
MERAMUNDALI 220/132 kv {Meramundali Traction, Dhenkanal, Navchrome(I), Hind Metal, Aarti,BRG}	3x100	59.16	11	19:30	10.24	28	23:15	
		51.68	30	18:15	10.08	28	23:15	
		NOT AVAILABLE						
Mendhasal	1x100	NOT AVAILABLE						
NARENDRAPUR 220/132KV { Narendrapur, NarendrapurTr, Berhampur, Chhatrapur, Ganjam, Balugaon, Digapahandi, Mohana.}	2x160	99.12	17	18:15	12.36	3	13:45	
		113.56	19	17:30	11.12	30	7:15	
	1x100	NOT AVAILABLE						
PARDEEP 220/132 KV { Paradeep, Kendrapada, Pattamundai, Chandikhol, Cuttack, Jagatsinghpur, Phulnakhara}	1x160	95.16	10	18:00	27.68	27	1:45	
	1x100	71.40	5	8:30	16.92	22	1:15	
	1x50	METER NOT AVAILABLE						
TARKERA 220/132 KV [ Rourkela, Rourkela Tr.,RSP(I), Chhend , Adhunik Metal, Rajgangpur, OCL(I), Rajgangpur Tr.]	4x100	71.00	10	9:30	5.36	5	18:15	
		65.04	25	18:15	8.48	5	18:15	
		71.20	10	9:30	11.20	2	20:30	
		70.92	10	9:30	11.68	2	20:30	
THERUVALLI 220/132 KV. {Theruvalli, IMFAL(I), JK(I), Junagarh, Kesinga,Powmex(I), Rayagada, }	2x100	85.16	27	17:45	23.48	27	11:30	Rayagada & Paralakhemundi can be fed from Machhkund system.
		80.48	27	17:45	22.72	0:00	11:30	
TTPS 220/132 KV { Chainpal, FCI (I), Angul, MCL Nandira(I), Rairakhole,Boinda,Kamakhyanager, Kalarangi,Nuapatna, Choudwar }	1x160	75.00	22	23:00	1	21	18:00	
	1x160	75.00	22	23:00	1	21	18:00	
Samangara	1x100	NOT AVAILABLE						

In the last meeting it was deliberated that procurement of meters was under process.

**CGM (O&M) may please deliberate the status.**

**(E) DISCOM Drawal up to the month of January'17**

Name of DISCOM	Month	Approved Energy Drawal Prorated for the month (MU)	Scheduled Energy (MU)	Actual Energy Drawal (MU)	Open Access Import Schedule (MU)	Net Energy Drawal (MU)	Overdraw (MU)
		1	2	3	4	5=(3-4)	6=(5-2)
CESU	April'16	704.384	745.175	785.466	7.945	777.521	32.346
	May'16	727.863	754.537	769.278	14.893	754.385	-0.152
	June'16	704.384	728.317	760.387	12.791	747.596	19.279
	July'16	727.863	736.383	752.465	13.163	739.302	2.919
	Aug'16	727.863	731.392	749.383	16.214	733.169	1.777
	Sept'16	704.384	692.808	727.25	16.844	710.406	17.598
	Oct'16	727.863	684.054	719.361	19.376	699.985	15.931
	Nov'16	704.384	575.946	599.487	16.815	582.672	6.726
	Dec'16	727.863	558.481	583.79	19.407	564.383	5.902
	<b>Jan'17</b>	<b>727.863</b>	<b>548.731</b>	<b>585.232</b>	<b>19.72</b>	<b>565.512</b>	<b>16.781</b>
WESCO	April'16	579.452	617.311	657.707	18.777	638.93	21.619
	May'16	598.767	634.558	679.648	25.441	654.207	19.649
	June'16	579.452	643.125	651.414	23.867	627.547	-15.578
	July'16	598.767	629.509	675.567	31.735	643.832	14.323
	Aug'16	598.767	607.205	658.853	43.023	615.83	8.625
	Sept'16	579.452	570.415	581.591	31.785	549.806	-20.609
	Oct'16	598.767	562.624	588.719	30.95	557.769	-4.855
	Nov'16	579.452	513.055	560.377	33.899	526.478	13.423
	Dec'16	598.767	531.741	575.546	56.568	518.978	-12.763
	<b>Jan'17</b>	<b>598.767</b>	<b>541.877</b>	<b>634.623</b>	<b>99.262</b>	<b>535.361</b>	<b>-6.516</b>
NESCO	April'16	447.945	472.674	544.157	70.768	473.389	0.715
	May'16	462.877	447.214	545.786	90.686	455.1	7.886
	June'16	447.945	453.173	568.294	93.911	474.383	21.21
	July'16	462.877	464.223	637.112	160.664	476.448	12.225
	Aug'16	462.877	464.344	565.592	106.664	458.928	-5.416
	Sept'16	447.945	466.494	549.786	88.571	461.215	-5.279
	Oct'16	462.877	477.866	572.348	106.136	466.212	-11.654
	Nov'16	447.945	401.377	511.69	107.966	403.724	2.347
	Dec'16	462.877	388.36	503.864	114.956	388.908	0.548
	<b>Jan'17</b>	<b>462.877</b>	<b>428.609</b>	<b>523.455</b>	<b>106.925</b>	<b>416.53</b>	<b>-12.079</b>
SOUTHCO	April'16	285.205	285.017	284.863	0.007	284.856	-0.161
	May'16	294.712	287.919	279.859	1.193	278.666	-9.253
	June'16	285.205	269.339	273.405	0.696	272.709	3.37
	July'16	294.712	275.04	285.042	0.196	284.846	9.806
	Aug'16	294.712	281.303	290.572	5.995	284.577	3.274
	Sept'16	285.205	278.812	279.315	2.821	276.494	-2.318
	Oct'16	294.712	277.521	279.892	4.25	275.642	-1.879
	Nov'16	285.205	248.696	258.424	3.396	255.028	6.332
	Dec'16	294.712	260.868	264.555	3.685	260.870	0.002
	<b>Jan'17</b>	<b>294.712</b>	<b>260.179</b>	<b>268.099</b>	<b>3.716</b>	<b>264.383</b>	<b>4.204</b>

*The figures are as per EBC data. Energy drawal by SOUTHCO are excluding of energy consumed by NALCO at Damanjodi and IMFA at Theruvali.*

**Members may please discuss.**

**(F) Energy Generation / Import during the month of January'17**

Source of Power	Energy (MU)
Thermal (TTPS+IB)	586.89
OHPC Stations including Machhkund share	298.17
CGP Support	228.40
IPP Support	429.27
SOLAR POWER	17.77
ISGS drawal	537.88
<b>TOTAL</b>	<b>2098.38</b>

**(G) Drawal of Machhakund Power**

The drawal of Machhakund power up to the month of **January'17** are as detailed:

Month	Total Generation		Odisha Drawal		AP Drawal	
	MU	MW	MU	MW	MU	MW
April'16	42.784	59.42	19.714	27.380	21.032	29.21
May'16	54.998	73.92	19.860	26.690	33.100	44.48
June'16	52.601	73.06	22.143	30.750	28.162	39.11
July'16	61.250	82.32	27.531	37.000	31.460	42.28
August'16	65.386	87.88	30.816	41.420	31.871	42.84
September'16	66.248	92.01	31.835	44.210	31.739	44.08
October'16	67.765	91.081	31.269	42.028	33.822	45.459
November'16	66.324	92.116	30.673	42.600	32.982	45.808
December'16	68.371	91.896	32.236	43.327	33.356	44.833
<b>January'17</b>	<b>68.975</b>	<b>92.708</b>	<b>33.356</b>	<b>44.833</b>	<b>32.627</b>	<b>43.853</b>
<b>TOTAL</b>	<b>614.702</b>		<b>279.433</b>		<b>310.151</b>	

In the 105<sup>th</sup> PSOC meeting CGM (Telecom) stated that RVDU is expected to be commissioned by February'17. CGM (O&M) stated that the traction bay at Machhakund switchyard and associated line shall required for evacuation of power from the proposed 20 MW small hydro station, which is likely to come up in near future. As such the bay is required to be equipped properly.

**SLDC/ Sr. GM (O&M) -I / CGM (Tel) / OHPC/ Southco Utility may deliberate the status.**

**(H) Under Frequency Relay operation in OPTCL System during the month of January'17.**

Since, the frequency had never gone beyond the lowest setting of UFR, there was no UF Relay operation occurred during the month of **January'17**.

**Members may note.**

**(I) Status of Open Access applications up to the month of January'2017**

The status of different types of Open Access applications received and disposed by SLDC is as tabled.

Sl. No	Month	No of Applications received					No of Applications Disposed					No of App. Rejected
		Intra-State	Inter-State			Total	Intra-State	Inter-State			Total	
			Bilateral		PXI			Bilateral		PXI		
			ST	MT/LT				ST	MT/LT			
1	April'16	7	124	0	25	156	6	124	0	25	155	1
2	May'16	6	67	2	16	91	5	67	2	12	86	5
3	June'16	4	79	0	39	122	3	79	0	26	108	14
4	July'16	4	118	0	35	157	3	118	0	30	151	6
5	Aug'16	8	127	0	23	158	7	127	0	21	155	3
6	Sept'16	5	86	1	35	127	5	86	1	33	125	2
7	Oct'16	7	78	0	38	123	6	78	0	38	122	1
8	Nov'16	10	70	0	40	120	8	69	0	30	107	13
9	Dec'16	14	47	0	60	121	14	47	0	57	118	3
10	Jan'17	29	73	0	46	148	26	73	0	42	141	7
	<b>Total</b>	<b>94</b>	<b>869</b>	<b>3</b>	<b>357</b>	<b>1323</b>	<b>83</b>	<b>868</b>	<b>3</b>	<b>314</b>	<b>1268</b>	<b>55</b>

## **PART C – Issues discussed in the 130<sup>th</sup> OCC meeting of ERPC on 17.02.2017**

### **C.1: Status of projects funded under PSDF schemes**

In the PSDF review meeting held on 29.04.16 at N. Delhi, it was advised to RPCs to monitor the status of all the projects funded by PSDF. Therefore, constituents are requested to update the status of projects which are being funded by PSDF in the desired format.

The latest status as updated by OPTCL is as given below:

SI No	Name of Constituent	Name of Project	Date of approval from PSDF	Target Date of Completion	Amount Approved (in Rs.)	Amount Drawn till date (in Rs.)	Status as updated in 129 <sup>th</sup> meeting
3	OPTCL	Renovation & Up-gradation of protection and control systems of Sub-stations in the State of Odisha in order to rectify protection related deficiencies.	11.05.15	10.05.17	162.5 Cr.	19.53 Cr.	<p>1. Letter of Award detail submitted to PSDF till date: ₹18.70Cr.</p> <p>2. Letter of Award detail under process for submission to PSDF till date: ₹49.03Cr.</p> <p>3. Amount received from PSDF: i. ₹4.92Cr. against LOA submitted under item 1 (i.e., ₹18.70Cr.) ii. 10% of sanctioned amount. ₹14.67Cr.</p>

**ERPC advised to submit monthly updated report to RPC secretariat.**

In the 103<sup>rd</sup> PSOC meeting, it was decided that SLDC shall prepare the DPR for implementation of ADMS and submit to CGM (O&M) for inclusion in PSDF.

In the 129<sup>th</sup> OCC meeting, ERPC advised to furnish the information in the prescribed format (Annexure-B.3 of OCC agenda) by first week of every month on regular basis to Member Convener, PSDF Project Monitoring Group (AGM, NLDC, POSOCO) with a copy to NPC Division.

In the 104<sup>th</sup> PSOC meeting SLDC stated that DPR in respect of ADMS implementation will be done after finalization of tender documents.

In the 105<sup>th</sup> PSOC meeting it was decided that SLDC shall prepare the DPR in respect of ADMS implementation and placed before the BoD for approval. After approval the same will be proposed for PSDF funding.

**CGM (O&M) / SLDC may please deliberate.**

### **C.2: Consideration of STU lines as Non-ISTS lines carrying ISTS power**

In line with 34<sup>th</sup> TCC decision, ERPC and ERLDC conducted the load flow study using WebNet software for first three quarters of validated data. Summary of the results for percentage utilization of the transmission line by STU to meet the own demand is given at **Annexure-B.5**.

Balance (100 - utilization of the transmission line by the STU) is the ISTS power flowing through the line.



128th OCC decided that ISTS power flowing through STU lines greater than 50% of the total power as per the WebNet software of the validated data for each quarter will be considered as ISTS line.

Members provisionally agreed to the above decision. OCC advised Member Secretary to have interaction with other RPCs to get acquainted with their decisions in this regard.

OCC advised all the state constituents to submit their comments if any, to ERPC and ERLDC. It was also pointed out that for final decision on the same needs to be taken by CERC and for this constituents are to file petition before CERC.

#### Annexure-B5

##### OPTCL lines

Sl	Name of Line	Percentage utilization to meet Odisha Demand		
		Quarter 1 2016-17	Quarter 2 2016-17	Quarter 3 2016-17
1	400 kV Indravati-Indravati(PG)	34.4%	31.4%	35.7%
2	400 kV Regali-Keonjhar	15.2%	13.7%	18.2%
3	400 kV Keonjhar-Baripada	15.2%	13.7%	18.2%
4	400 kV Baripada-Khargpur	Natural ISTS		
5	220 kV Balimela-U.Sileru	Natural ISTS		
6	220 kV Jeypore-Jaynagar D/C	6.5%	5.3%	10.7%
7	220 kV Budhipadar-Korba D/C	Natural ISTS		
8	220 kV Tarkera-Bisra D/C	75.7%	71.1%	80.7%
9	220 kV Joda-Ramchandrapur	Natural ISTS		
10	220kV Joda-Jindal	0.2%	0.4%	0.5%
11	220 kV Jindal-Jamsedpur	Natural ISTS		
12	220 kV Rengali-Rengali(PG)	46.4%	38.8%	44.7%
13	220 kV Rengali PH- TSTPS	83.8%	79.9%	86.3%
14	220 kV TTPS-TSTPS	53.2%	44.5%	52.2%
15	220 kV TSTPS-Meramundali	42.2%	23.3%	33.1%
16	220 kV Baripada-Balasore	92.8%	91.3%	93.7%
17	132 kV Joda-Kendposi	Natural ISTS		
18	132 kV Baripada-Rairangpur	99.7%	99.8%	88.7%
19	132 kV Baripada-Baripada(PG)	99.4%	99.7%	99.5%

In the 105<sup>th</sup> PSOC meeting it was decided that a separate meeting will be convened by CGM (RT&C) to ascertain the status of natural ISTS.

**CGM (RT&C) / CGM (PP) may deliberate / Members may update.**

### C.3: High Voltage problem in 400 kV Meramundali grid S/S: Regarding

GRIDCO vide letter dated 07.01.17 intimated that presently Odisha is going through very high Voltages at 400kV bus of Meramundali, Duburi and Mendhashal grid S/S. The situation is further worsened due to high reactive power flow from Meramundali to Angul pooling sub-station, from Duburi to Meramundali sub-station and from Kuchei to Duburi sub-station. It may be noted that, PGCIL has installed two nos. of 330 MVAR Bus reactors at Angul 765kV substation and two nos. of 125 MVAR Bus reactors at Angul 400kV substation, thus resulting high reactive power flow from Meramundali to Angul & Duburi to Meramundali grid S/S. In view of the above OPTCL suggests the following as short term and long term measures to mitigate the high Voltage issue as well as to improve the high reactive power flow situation.

#### Short term measure

- OPTCL will install 80 MVAR reactor at Meramundali 400kV S/S.
- The Angul-Meramundali Double circuit ties to be opened at both ends.

### **Long term measure**

- The Meramundali-Angul Double circuit will be terminated at Meramundali (B).

A letter regarding the above change has already been forwarded to CEA and will be placed in the next Standing Committee meeting of CEA. Meremundali (B) will be a new 400kV substation of OPTCL, approved by CEA and the work order to be issued shortly.

In view of the above and as the high voltage situation is menacing, it is requested to grant permission for the short term measures, mentioned above, to get relief from the high voltage issue and high reactive power flow. The system in the above condition will remain stable.

In 129th OCC, OPTCL informed that they are incurring substantial financial loss on account of reactive charges due to this overvoltage problem at 400 KV Meramundali substation and requested to explore the high voltage scenario by opening of 400 kV Angul-Meramundali D/C tie on trial basis.

ERLDC informed that the same may be granted as per real time grid conditions.

Further, OPTCL requested OCC to take up the issue of opening of LILOs of 400 kV Talcher-Meramundali & Bolangir –Meramundali lines at 765/400 kV Angul S/s which was already decided in 17th SCM meeting.

OCC viewed that as it is the matter related to Standing Committee of ER the same may be taken up with CEA/CTU.

MS assured to interact on this issue with CTU.

Subsequently, MS took up the issue with CTU and it was agreed that ERLDC will carry out study for Reactive power flow in OPTCL system.

ERLDC vide mail dated 06.02.17 has sought some data from OPTCL for carrying out the study.

**CGM (O&M) / CGM (PP) may update the status.**

### **C.4: Restoration of PLCC system of important lines**

In 119th OCC, JUSNL informed that the following:

- a) In 220 KV Chandil –Santaldih line auto-reclosure has been enabled and termination done in PLCC panels at Chandil end but due to non-availability of PLCC panels at Santaldih (WBPDC) end the A/R and PLCC scheme could not be activated.
- b) In 220 KV Ramchandrapur-Joda line auto-reclosure has been enabled and termination done in PLCC panels at Ramchandrapur end but due to non-availability of PLCC panels at Joda (OPTCL) end the A/R and PLCC scheme could not be implemented.

Further, it was informed that JUSNL is ready to share their standby PLCC panels (BPL make) with WBPDC (for Santaldih end) and OPTCL (for Joda end) to complete the PLCC schemes of both the above lines.

*In 34th TCC, WBPDC informed that PLCC panels will be delivered by November, 2016 and installation of the panels will be completed by December, 2016.*

*OPTCL informed that purchase order has been placed to BPL and supply is expected by December, 2016.*

*In 128th OCC, WBPDCCL informed that PLCC system will be installed by end of December, 2016.*

*OPTCL informed that PLCC panels will be installed by 2nd week of January 2017.*

In the 129th OCC meeting of ERPC it was deliberated that the commissioning work shall be completed within 10 days.

In the 105<sup>th</sup> PSOC meeting CGM (Telecom) stated that the PLCC will be commissioned by 1<sup>st</sup> week of February' 17.

**CGM (Telecom) may please update the status.**

**C.5: 220 kV inter-connecting lines of OPTCL with 400/220 kV Bolangir (PG), Keonjhar & Pandiabil S/s**

PGCIL has already commissioned the 2x315MVA 400/220kV Bolangir S/s by LILoing of 400 kV Meramandali-Jeypore S/C line and 400/220 kV Keonjhar S/s with an objective of supplying power from ER grid to its adjoining areas in Odisha.

In 129<sup>th</sup> OCC of ERPC, SLDC deliberated the completion schedule of inter-connecting system as follows:

Sl. No.	Name of the transmission line	Completion schedule
<b>1.</b>	<b>2 X 315MVA 400/220kV Bolangir S/s</b>	
a.	LILo of one circuit of Sadeipalli-Kesinga 220 kV D/C line at Bolangir S/S.	Construction of 220 kV Sadeipali-Kesinga portion only is under consideration. Expected by March-17
b.	LILo of one circuit of Katapalli-Sadeipalli 220 kV D/C line at Bolangir S/S.	<b>Charged on 04.05.16</b>
<b>2.</b>	<b>400/220 kV Keonjhar S/S.</b>	
a.	Keonjhar (PG)-Keonjhar (OPTCL) 220 kV D/C line	By 2017
b.	Keonjhar (PG)-Turumunga (OPTCL) 220 kV D/C Line.	By 2019
<b>3.</b>	<b>400/220 kV Pandiabil Grid S/s</b>	
a.	Pratapsasan(OPTCL)-Pandiabil (PG) 220 kV D/C line	December 2017 (Work started)
b.	LILo of one circuit of Atri-Puri (Samangara) 220 kV D/C line at Pandiabil (PG)	March'2017

**CGM (Const) / CGM (O&M) may please update the status.**

**C.6: Preparation of crisis management plan for Cyber Security in Power Sector in line with CERT-IN.**

The activity of the preparation of Crisis Management Plan for countering the cyber attacks and its implementation including the Mock Drills, audits etc. is being monitored by CEA regularly in line with crisis management plant of Ministry of Power. Power Utilities (including generation, transmission & distribution utilities) of eastern region are to furnish regularly, the updated status to Chief Engineer, Distribution Planning & Development Division, CEA.NTPC communicated

their activity of the preparation of Crisis Management Plan for countering the cyber attacks vide letter dated 2nd August, 2013.

In 113<sup>th</sup> OCC, Member Secretary informed that during interaction with consultants of Grid Study Committee, NLDC agreed that they will plan for conducting workshops on crisis management plan for Cyber Security and few workshops will also be held in Eastern Region.

CESC vide letter dated 22.08.15 had furnished their status of the preparation of Crisis Management Plan (CMP) for Cyber attacks in their system.

In the 104<sup>th</sup> PSOC meeting IT stated that the license in respect of the L1 bidder has been expired. Memorandum has been placed before the CSC to decide whether contract will be awarded to the L2 bidder.

In the 105<sup>th</sup> PSOC meeting IT stated that the award of work directly to STQC is under examination. The L2 bidder has also been invited for negotiation.

**CGM (IT) may please deliberate the status.**

#### **C.7: Certification through BIS as per IS 18001:2007 to all generating / transmission units.**

In 84<sup>th</sup> OCC meeting all constituents were requested to interact with BIS with intimation to ERPC and get certified as per CEA direction.

In 85<sup>th</sup> OCC, NTPC informed that NTPC-Farakka has been certified with IS 18001. Other constituents including OHPC requested to interact with BIS with intimation to ERPC and get certified as per CEA direction. The matter is getting reviewed by highest authorities with top priority.

In the 104<sup>th</sup> PSOC meeting O&M stated that discussion with the participants is in progress.

In the 105<sup>th</sup> PSOC meeting O&M stated that price bid will open on 3<sup>rd</sup> February'2017.

**CGM (O&M) may deliberate the status.**

#### **C.8: Implementation of New Web Based Scheduling at ERLDC**

Presently, development of web-based scheduling software at ERLDC by PWC is completed and the testing of the software is at final stage. Now ERLDC is doing the parallel operation of the new WBES software along with the older one. The same software was already being installed at WRLDC and made operationalize with effective from 01st July, 2016. A detailed workshop cum interactive Session with all Stakeholders/beneficiaries shall be arranged during 20-21 February, 2017, wherein the detailed presentation of the software features and new scheduling procedures, associated issues and concerns will be deliberated. Some new procedure like surrender philosophy, LTA/MTOA requisition and ramping up/down rate consideration of ISGS had already been deliberated and approved in 123rd OCC, ERPC meeting. The beta version of the software will be available for testing after training to the stake holders. In this regards all users – regional constituents, generators (RLDC control Area) and regional entities are requested to nominate 1-2 officers involved in scheduling activity at your end in the proposed training cum joint exercise on WBES at ERLDC Kolkata during 20 – 21 February 2017.

**SLDC may deliberate.**

### **C.9. Tie bay of 125MVAR Bus reactor and 400kV Indravati-Indravati and Indravati(PG):**

Under outage wef 18/03/16 due to R-Ph pole bursting of Tie CB. Due to non-availability of the tie bay, the Buses are coupled only via the tie bay of 400kV Rengali-Indravati and 400kV Indravati-Jeypore at Indravati and any outage of the lines would result in decoupling of the Buses.

In 125th OCC, Powergrid informed that main CB has some problem which will be taken care by OHPC/OPTCL.

*In 126th OCC, OPTCL informed that a CB is being shifted from Mendhasal for replacement of the subjected CB. The installation work will be completed by November, 2016.*

*In 128th OCC, OPTCL informed that the CB is yet to be transported to the site from Mendhasal.*

In the 104<sup>th</sup> PSOC meeting it was deliberated that Transportation tender has been finalized. Work order will be placed soon.

In the 129<sup>th</sup> OCC meeting of ERPC it was deliberated that the commissioning of breaker shall be completed by 15<sup>th</sup> February, 2017.

In the 105<sup>th</sup> PSOC meeting CGM (O&M) stated that the work has already been started.

**CGM (O&M) may update the progress.**

### **C.10: Implementation of Automatic Demand Management Scheme**

OPTCL vide mail dated 24.02.2016 pointed that Hon'ble CERC vide their order dated 31.12.2015 passed in Sou-motu Petition No.- 5/SM/2014 in the matter of non-compliance of Regulation 5.4.2 (d) of IEGC directed all Respondents (SLDCs) for implantation of ADMS in their respective control area. CERC have allowed dead line till 30.06.2016 to the Respondent for implementation of ADMS. Failing which they will be liable for action under Section 142 of the Act.

\*\*\*\*\*

A team of officers had visited Gujarat SLDC on 30.08.2016 to observe the implementation of ADMS in their State. It was found that a separate type of RTU known as "Client RTU" has to be installed in the grid sub-stations where the pre identified 33kV feeders (to be isolated under ADMS) are located. These are in addition to the existing RTUs. One ADMS server shall be installed at SLDC which will acquire data from SCADA server to compare the over drawal of the State and Discoms and send the signal to the client RTU for isolation of the pre identified 33kV feeders. Since, all these activities are related to SCADA & communication, Telecom wing need to be involved for implementation of the scheme. A team is to be constituted with Telecommunication, SLDC & OPTCL Engineers for this purpose.

One presentation was made by M/s Kirti Telnet, Ahemedabad, the agency provided ADMS solution to Gujarat on 17.10.16 in the Conference Hall of GRIDCO. SLDC shall float tender for this purpose.

In the 103<sup>rd</sup> meeting, SLDC stated that Technical specifications have already been prepared considering Sub-station automation along with views of Telecom. Tender will be floated by 15<sup>th</sup> January'17 after finalization of financial terms & conditions. SLDC may confirm whether separate RTUs are required or not in view of S/S automation scheme taken up by OPTCL.

In the 104<sup>th</sup> PSOC meeting SLDC stated that Technical specifications have already been prepared considering Sub-station automation along with views of Telecom. Tender will be floated by 15<sup>th</sup> January'17 after finalization of financial terms & conditions.

In the 105<sup>th</sup> PSOC meeting SLDC stated that the DPR will be prepared for approval of BoD for PSDF funding.

**Members may discuss. Discoms / CGM (Telecom) / SLDC may deliberate.**

### C.11: Mock Black start exercises in Eastern Region

Schedule of Mock black start exercise for State Hydro Stations are as tabled.

Sl.	Name of HEP	Completed on	Scheduled
1	U.Kolab	25.01.2017	January 2017
2	Rengali	25.01.2017	January 2017
3	Upper Indravati	16th July 2016	February 2017
4	Burla	28.07. 2016	February 2017

**OHPC / SLDC may deliberate.**

### PART-D – Operational Issues

#### D.1: Non-compliance of drawal schedule by DISCOMs

Non compliance of drawal schedule messages issued to Discoms during the month of Dec'16:

Sl. No	Name of Discom	No. of message issued	Over drawal (MU)	Deviation (%)
1	CESU	4	16.781	3.058
2	WESCO	2	-6.516	1.202
3	NESCO	2	-12.079	2.818
4	SOUTHCO	0	4.204	1.615
	<b>Total</b>	<b>8</b>	<b>2.390</b>	

It is noticed that CESU had overdrawn substantial quantum to the tune of **16.781** MU.

**SLDC/ Discoms may please deliberate.**

#### D.2: Prolonged outage of transmission elements and tentative revival dates

The tentative revival dates of transmission elements are updated in the last meeting are as follows:

Sl.No	Name of transmission element	Reason of outage	Probable date of revival
1	400kV Meramundali-Mendhasal ckt.	Tower Collapse at Loc-180, 181 & 182	February-2017
2	400/220kV, 315 MVA ICT-I at Meramundali	Burnt	February-2017
3	220 kV Meramundali-Bhanjanagar ckt-I	Conductor replacement	February-2017
4	220 /132 kV, 100 MVA, Auto-3 at Chandaka.	Breaker replacement	
5	220/132 kV, 100 MVA, Auto- 2 at Duburi	Oil leakage since 24 <sup>th</sup> October'2016	
6	132 kV Sunabeda-Damanjodi	For conversion to DC	

**C.G.M. (O&M) may please update the status.**

#### D.3: Communication issues

##### Installation of communication equipment by CGPs / Industries.

The status of data communication from CGPs as deliberated in the last meeting is as follows.

Sl.	Name of CGP	Present status
1	M/s IFFCO, Paradeep	Outdoor commissioning work completed. RTU was locally tested. After replacement of the faulty CVT, data will be integrated.
2	M/s MSP Metallicks	PLCC / RTU installed. Database has already been prepared by OPTCL. Final RTU integration with OPTCL system by the vendor is awaited.
3	M/s NINL, Duburi	M/s NINL has requested for Scheme, BOQ for PLCC / SCADA, which has been forwarded by OPTCL. No action has been taken by NINL so far.
4	M/s Rohit Ferro tech	PLCC established and inspection by Telecom Engineers completed. Database has already been prepared by OPTCL.
5	BPSL	No kV
6	CONCAST	No kV/Hz.
7	BSL	No Hz & status data.
8	JSL	No Bus kV / Hz (for Bus-2)
9	TSIL	No data
10	VISA	CB & Status data are not available
11	Paradeep	Data not available at ERLDC
12	Bolangir (New)	Data not available at ERLDC

It was also decided that GCC, OPTCL may file a case before the OERC through RT&C wing of OPTCL against those CGPs not complying the data communication provisions with SLDC. In the 102<sup>nd</sup> PSOC meeting CGM (RT&C) stated that they have already intimated the list of CGPs / Bulk consumers not complying with the provisions of data communication with SLDC. In the 103<sup>rd</sup> meeting, SLDC suggested that RT&C wing may approach again to OERC if required through an affidavit.

In the 105<sup>th</sup> PSOC meeting GCC stated that OERC have asked to submit the status of data communication through SCADA by the Users by 28<sup>th</sup> February'17. A separate meeting to discuss the issue will be convened for discussion

#### **CGM (Telecom) / GCC/RT&C may update the status**

#### **D.4: Web based drawal / generation scheduling.**

SLDC is going to implement web based drawal / generation scheduling for Dist. Utilities and State generating stations including IPPs and CGPs soon.

SLDC had organized training on web based scheduling on 11.05.2016 for all the CGPs connected with OPTCL network. The feedback of the CGPs has been forwarded to IT wing.

IT wing presented a demo before SLDC on 19<sup>th</sup> December 2016.

SLDC organized a demo on 27<sup>th</sup> December'2016 for all the CGPs. As reported by the CGPs, they are facing some problems while using the application. The feedback of CGPs has been forwarded to IT wing for necessary action.

In the 105<sup>th</sup> PSOC meeting CGM (IT) stated that they have resolved the issues which are minor. Scheduling through the software may be done from 1<sup>st</sup> April'17. SLDC stated that the Discom and generation scheduling may also be included by March'17.

#### **CGM (IT) / SLDC may deliberate.**

#### **D.5: Implementation of Automatic Meter Reading for OPTCL-Discom interface points.**

The work for Automatic Meter Reading (AMR) for all the interface points is in progress.

It was deliberated that that from 1<sup>st</sup> March onwards the AMR shall be made "Go live". Data will be available after one hour lapses of time.

In the 100<sup>th</sup> PSOC meeting CGM (IT) stated that by end of August'2016 testing of all meters of CESU control area will be completed for billing purpose. SLDC may check August data from both the meters.

In the 104<sup>th</sup> PSOC meeting, DGM (IT) stated that, data from 90 Nos of S/Ss will be provided by January'2017. Gridco stated that the events such as PT failure, CT polarity reversal, meter power failure, MD reset, time synchronization etc. are not being incorporated the AMR. It was decided that IT, SLDC and GRIDCO may have a separate meeting to resolve the issue.

In the 105<sup>th</sup> PSOC meeting DGM (IT) stated that, data from 100 Nos of S/Ss will be provided by February'17. The issues raised by Gridco will be addressed except Time synchronization and MD reset.

#### **SLDC / CGM (IT) may deliberate.**

## **D.6: Software for Deviation charge billing.**

Hon'ble OERC may notify "Intra State Deviation settlement and related matters" Regulation at any time. For implementation of the regulation, required software for Deviation Charge billing need to be developed and tested. CGM (IT) may take necessary steps for development of the software.

In the 102<sup>nd</sup> PSOC meeting, CGM (IT) stated that OPTCL BoD have approved for closure of contract with Infosys. SLDC may submit their new requirement if any, along with the left out works.

In the 103<sup>rd</sup> PSOC meeting, IT stated that data tender document has been prepared. Some disputes with Infosys are yet to be resolved for which legal opinion has been sought for.

In the 104<sup>th</sup> PSOC meeting CGM (IT) stated that a meeting has been scheduled on 23<sup>rd</sup> December'17 to discuss the issue. The decisions in the meeting will be communicated to CSC for necessary action.

In the 105<sup>th</sup> PSOC meeting CGM (IT) stated that the work will be awarded to TCS. SLDC has to spare one officer to involve with them.

**CGM (IT) / SLDC may deliberate the status.**

## **D.7: DISCOM Issues**

### **CESU**

There is a wide variation between actual drawal data and SCADA drawal data. The actual drawal of CESU excluding open access is 565.509 MU against 553.630 MU as per the SCADA data. Some of major deviations noticed are given below:

Date	Time	Actual Drawal (MW)	SCADA Data (MW)	Difference
01.01.2017	18:00 Hrs	978.08	900.69	77.39
02.01.2017	18:15 Hrs	1100.51	1017.70	82.80
03.01.2017	20:00 Hrs	1015.85	887.83	128.02
04.01.2017	18:15 Hrs	1067.84	981.82	86.02
05.01.2017	18:30 Hrs	1046.00	944.47	101.53
15.01.2017	15:15 Hrs	578.77	696.94	-118.17
15.01.2017	18:30 Hrs	1005.13	779.11	226.03
16.01.2017	03:30 Hrs	513.86	571.05	-57.19
17.01.2017	01:00 Hrs	526.96	604.26	-77.29

Requested to take action for correctness of SCADA data.

### **NESCO Utility**

- (i) In a no. of cases the revision of the Open Access schedule of Nesco Utility is being done by SLDC without any intimation to the Discom(here,Nesco Utility).There after this revision is being implemented with retrospective aspect from last several hours.The revision is to be made with with immediate effect.
- (ii) The Data communication of Rairangpur,Bangiriposhi & Barbil grid is not available on real time basis.

**CGM (Telecom) / SLDC / CESU may please deliberate.**



## PART E: OPERATIONAL PLANNING

### E.1: Commissioning status of New Transmission elements.

The status of commissioning of new transmission elements deliberated in the meeting is as follows:

Sl. No	Transmission element details	Present Status
1	Commissioning of 220 kV Jayanagar-Jeypore 2 <sup>nd</sup> DC line	Work has already been started. Expected to be completed by June' 2017.
2	Commissioning of 400 kV Meramundali-Mendhasal 2nd ckt	Line is ready and shall be charged after commissioning of 3 <sup>rd</sup> ICT at Mendhasal, which is under progress. ICT is at BHEL factory. Expected by March'2017.
3	Commissioning of 220 kV Bidanasi-Cuttack line	Idle Charged on 29.11.2016
4	Commissioning of 220/132 kV Cuttack S/S	Work in progress and expected to be completed by January' 2017.
5	Commissioning of 132 kV Baripada (PG)-Jaleswar line	Work has already been started, which will be completed by March 2017. Stringing started.
6	Commissioning of 220/132 kV Kesinga S/S	Work under progress. Expected by December' 2017.
7	Construction of 132 kV Baripada (PG)- Baripada 2 <sup>nd</sup> ckt.	Action initiated.

The list of Grid S/Ss charged during FY 2016-17 and scheduled to be charged during December'2016 to March'2017 is as tabled.

<b>132 kV Grid S/S charged during FY 2016-17 (till 01.11.16)</b>				
	Name of S/S	Date of charging	No. of bays	Name
1	Puri (Samangara)	30.05.2016	5	Sriramnagar
				Sriramnagar
				Gabakunda
				Vacant
				Vacant
2	Bangiriposi	03.10.2016	4	Bangiriposi under progress
				Vacant
				Vacant
				Vacant
<b>132 kV Grid S/S expected to be charged during November'16 to March'17</b>				
1	Infocity-II	23.12.2016	5	
2	Khajuriakata	March'17	5	33/11 kV S/S under Dindayal Scheme.
3	Chandaka-B	March'17	5	33/11 kV Chandaka S/S under ODSSP.
4	Malkangiri	March'17	5	Govindapali & Padia S/S const. in progress under ODSSP
5	Olaver	March'17	5	
6	Patangi	February'17	5	
7	Podagada	March'17	5	
8	Bonei	March'17	5	
9	Kasipur	March'17	5	
10	Bhogorai	March'17	5	
11	R.Udayagiri	March'17	5	
12	Tusara	March'17	5	

Distribution Utilities have to provide their action plan take-off arrangement for these S/Ss.

In the 103<sup>rd</sup> PSOC meeting CGM (O&M) suggested to adopt required protection standards may be at New Duburi sub-station if not already done. Independent approach to Argul sub-station may also be explored.

AO, WESCO had suggested the Discoms to estimated the cost involved in the take off arrangement & sent to Government for funding after due approval of District Committee.

In the 104<sup>th</sup> PSOC meeting, AO, WESCO stated that funding arrangement has been done for Lapanga takeoff arrangement.

In the 105<sup>th</sup> PSOC meeting SOUTHCO stated that they have taken similar step for Govt. funding. Other Discoms were requested to take necessary action.

**All DISCOMS may update the status / CGM(O&M) & CGM(Const.) may please deliberate.**

### **E.2: Energy Metering at Hydro stations.**

Energy meters have already been installed at all hydro stations. Billing for all OHPC stations is being done from the newly installed energy meters.

On completion of the above energy accounting for hydro stations will be taken up by SLDC.

In the 101<sup>st</sup> PSOC meeting OHPC stated that TTPS feeder meter at Rengali PH is yet to be changed. Sr. G.M. Indravati PH stated that ICT-II meter at Indravati is not recording correctly.

O&M may take necessary action for rectification of the meters at those hydro stations, so that energy accounting for hydro stations will be taken up by SLDC.

In the 103<sup>rd</sup> PSOC meeting, Sr. G.M., UIHEP stated that PT problem at Indravati will be resolved by January 2017.

In the 104<sup>th</sup> PSOC meeting it was suggested that OHPC shall explore rectification of PT at Indravati ICT, so that the energy accounting and computation of system loss for the state network will be done by SLDC.

In the 105<sup>th</sup> PSOC meeting Sr. G.M (Indravati) stated that Alstom Engineer will visit the site by 28<sup>th</sup> January. By the end of February the CVT is expected to be rectified.

**GRIDCO / OHPC / O&M / SLDC may please deliberate.**

### **E.3: Major Events in the month of January'17**

No report in respect of major events in OPTCL network during the month has been received.

### **E.4: Important Grid Incidences during the month of January'17.**

There is no reportable grid incidence

### **E.5: Outage of major transmission Elements during the month of January'17. (above 10 hrs).**

Outage of major transmission elements above 10 hours is as detailed.

Sl No	Transmission lines	Tripping Dt/time	Restoration Dt/time	Reason
1	220 KV Mendhasal- Nayagarh Fdr	01.01.17 01:23	01.01.17 12:13	B-Ph Insulator string damaged at Loc No.-343
2	132 KV Tarkera- Chhend Ckt-I	03.01.17 00:50	03.01.17 13:37	Maloperation of breaker without any relay indication.

**C.G.M. (O&M) may please deliberate.**

**E.6: Review of Outage Program of State Generators / Transmission elements for the month of March'17:**

Tentative Outage programme for State Generators for the month of **March'2017** are as follows:

Sl.	Station	Unit	Period	Remarks
1	Burla	# 2	22.07.16 to 15.03.17	Capital Maintenance
		# 3	10.03.17 to 31.03.17	Annual Maintenance
		# 5	25.10.16 to continue	Under R,M & U
		# 6	16.10.15 to continue	Under R, M & U
2	Chiplima	# 3	15.10.15 to continue	Under R,M & U
3	Balimela	# 1	05.08.16 to continue	Under R,M & U
		# 3	06.02.17 to 20.02.17	IDV problem
		# 8	07.11.16 to 28.02.17	Excitation problem
4	Rengali	# 1	09.01.17 to 20.02.17	Annual Maintenance
5	Upper Kolab	# 3	24.01.17 to 22.02.17	Annual Maintenance
6	Upper Indravati	# 2	02.02.17 to 28.02.17	Annual Maintenance
		# 3	01.03.17 to 31.03.17	Annual Maintenance

**OHPC / SLDC may deliberate.**

**E.7: Generation Program for the month of March'17.**

Generation schedule for the month of March'17 furnished by OHPC are given below.

Name of Hydro Gen. Station	Generation Programme (MW)		Reservoir Level as on 01.02.16	Reservoir Level as on 01.02.17	MDDL	High Flood Reservoir Level
	Mar'17 (1 <sup>st</sup> fortnight)	Mar'17 (2 <sup>nd</sup> fortnight)				
HPS-I, Burla	45	45	622.39ft	625.52 ft	590 ft.	630 ft.
HPS-II, Chipilima	35	35	-	-	-	-
Balimela	200	200	1492.40 ft	1500.80 ft	1440 ft.	1516 ft.
Rengali	70	70	117.95 mt	122.15 mt	109.72m	123.5 mtr.
U.Kolab	120	120	854.96 mt	855.79 mt	844 mtr	858 mtr.
U. Indravati	250	250	634.60 mt	638.21 mt	625mtr	642 mtr
MKD (O/D)	40	40	2739.75 ft	2734.85 ft	2685 ft.	2750 ft.
<b>TOTAL</b>	<b>760</b>	<b>760</b>				

**OHPC may deliberate & Members may discuss.**

**E.8: Anticipated power generation and demand for the month of March'2017.**

Sl. No	Discom	Average	Peak
1	CESU	900	1200
2	WESCO	800	1100
3	NESCO	800	1000
4	SOUTHCO	400	550
<b>6</b>	<b>Total Discom</b>	<b>2900</b>	<b>3850</b>
	<b>System Loss</b>	<b>120</b>	<b>150</b>
		<b>3020</b>	<b>4000</b>
<b>Availability</b>			
1	Hydro	760	1450
2	State Thermal	750	750
3	IPP, small hydro &RE	700	700
4	ISGS share (including OA)	800	900
5	CGP support (OA)	150	200
6	<b>Total availability</b>	<b>3160</b>	<b>4000</b>
7	<b>Surplus / Deficit</b>	<b>140</b>	<b>00</b>

**Members may discuss.**

## **PART F: OTHER ISSUES**

### **F.1: Renaming of SLDC website.**

The present id of SLDC website is <http://www.sldcorissa.org.in>. It is proposed to rename the name of the website as “[www.sldcodisha.org.in](http://www.sldcodisha.org.in)”.

**CGM (IT) / SLDC may please deliberate.**

### **F.2: Date and Venue of the next (107<sup>th</sup>) PSOC meeting.**